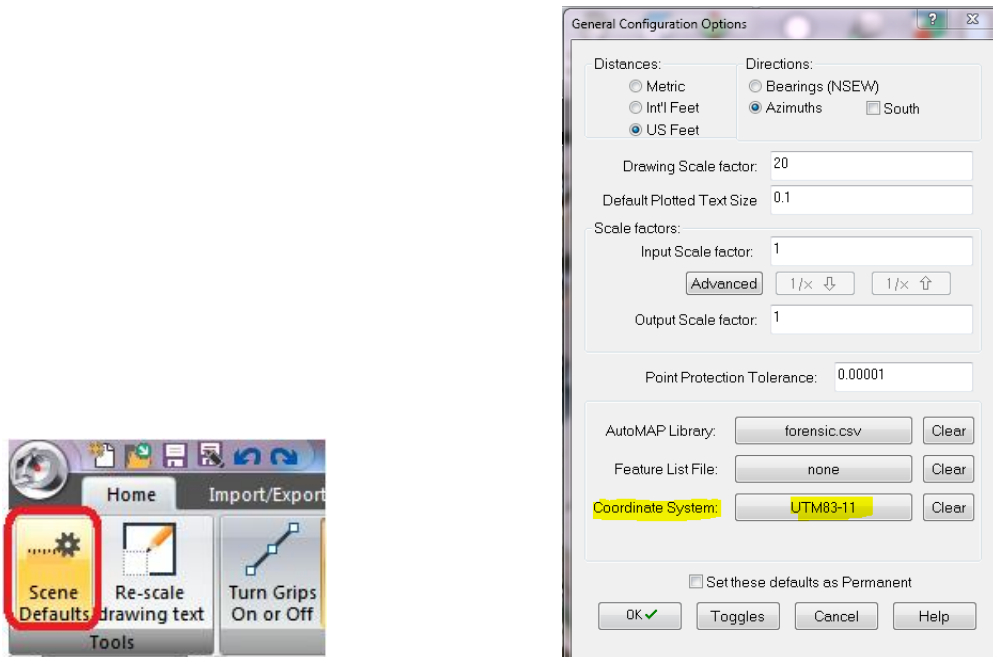
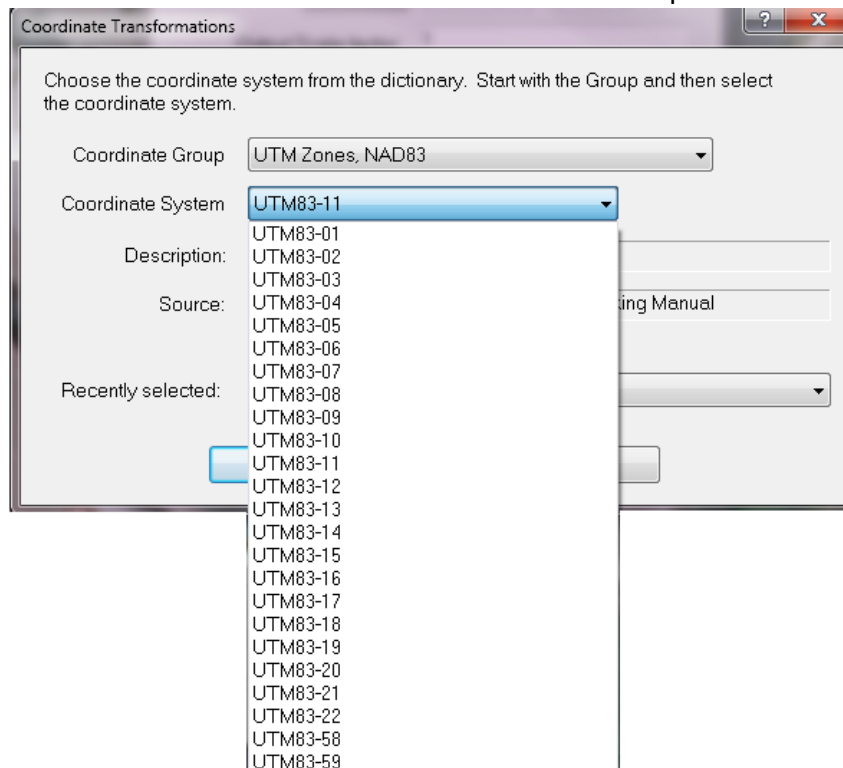


BING MAPS

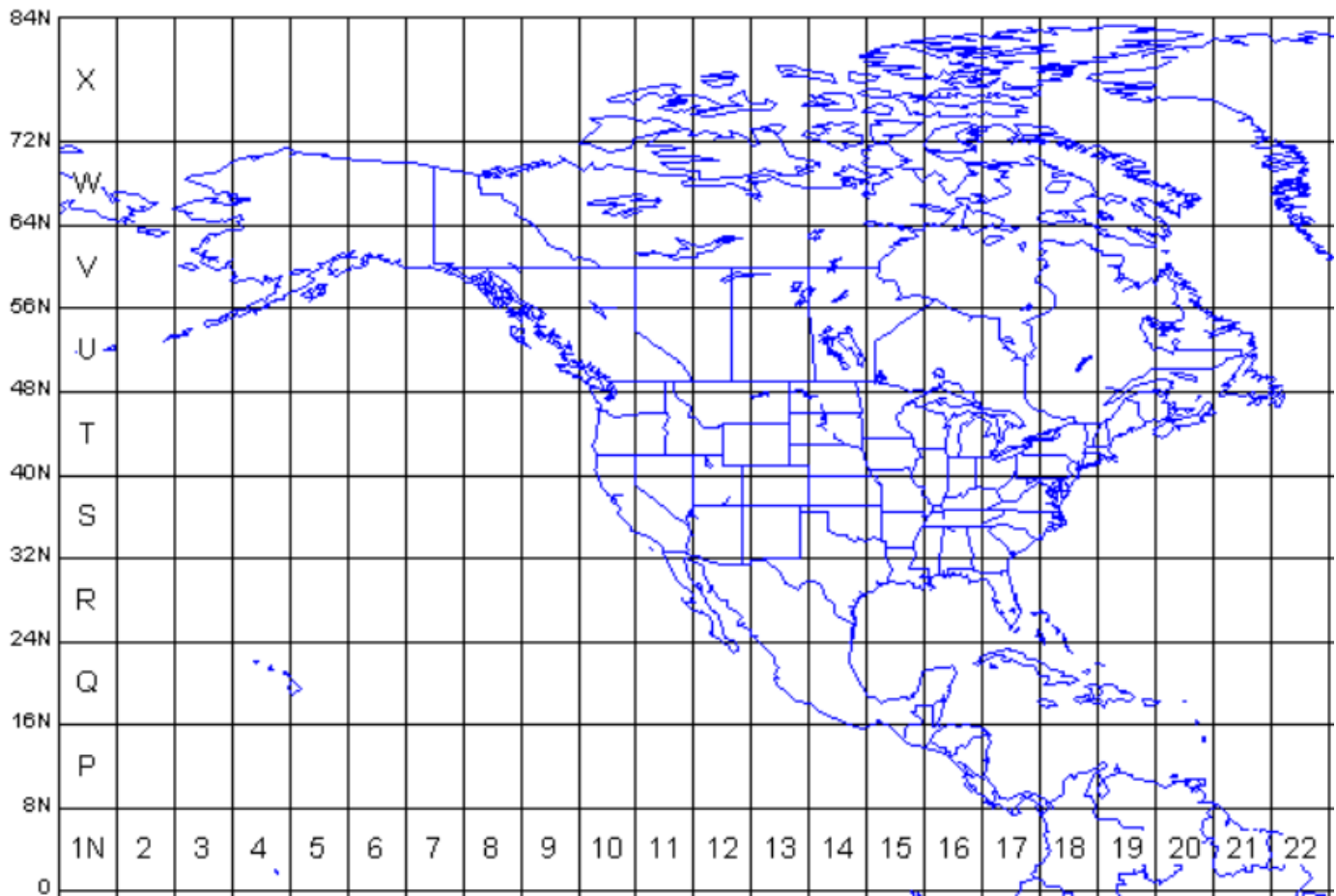
Before you use Bing Maps you will need to ensure your software is set up for your area coordinate system so that you have the correct map projection to allows for greater accuracy. In default Sketch Mode go to **Home** tab and select **Scene Defaults** on top left ribbon menu to bring up **General Configuration Options** dialog box as shown below. Click on the box for **Coordinate System** shown highlighted in yellow:



This will bring a Pull down with different UTM Zones. Refer to map below to find your **UTM Zone number**:



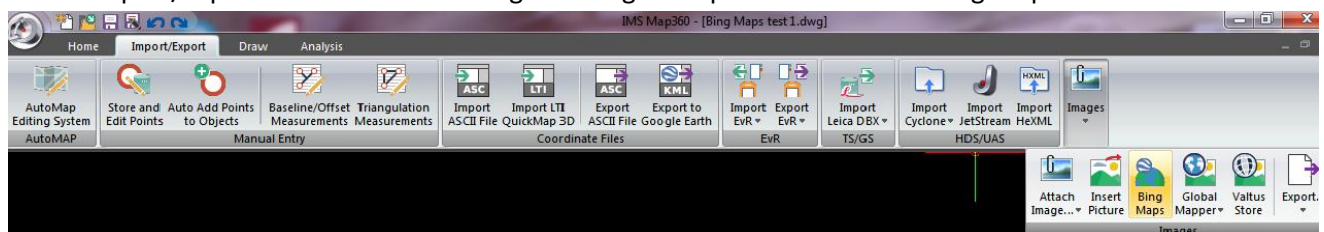
UTM Grid Zones of the World



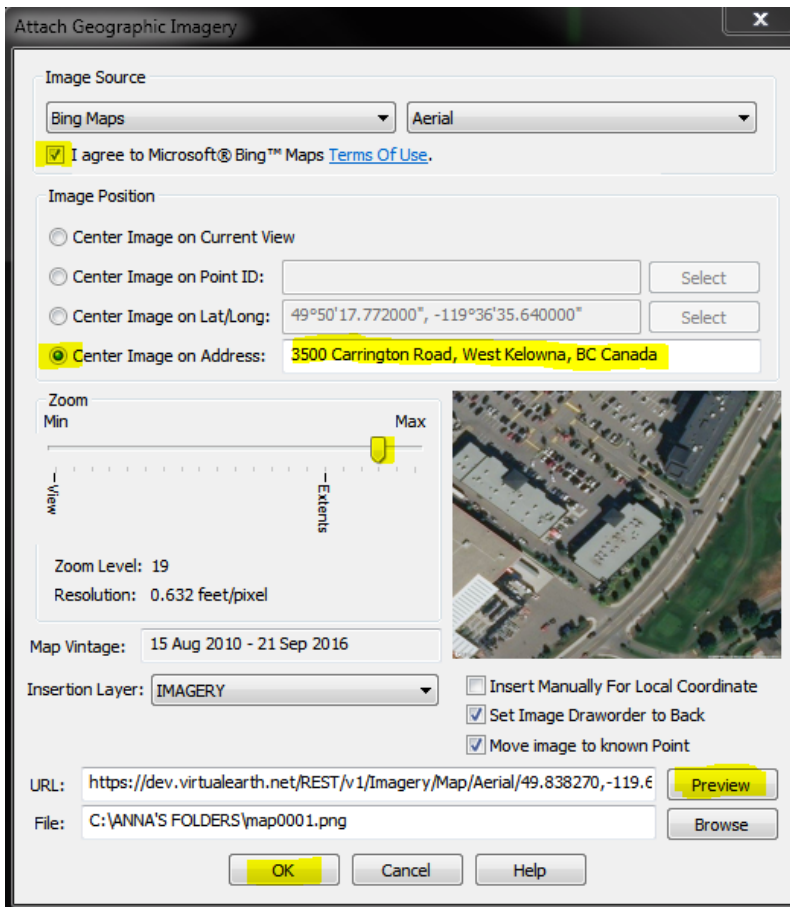
UTM (Universal Transverse Mercator) Coordinate System – UTM Grid: *By means of a map projection, the earth's curved surface is transformed to a flat two-dimensional surface. A coordinate system or grid is superimposed on the resulting flat surface. Such a coordinate system provides a referencing frame to define the position of objects.*

Once this is set up you can use the Bing Maps feature....

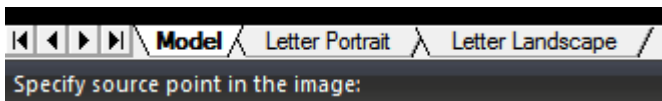
Under Import/Export Tab in Sketch Mode go to Images drop down and select Bing Maps:



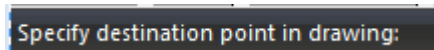
Select as below and enter address you wish to use. The Min-Max slide bar zooms in or out – Max is closer up. Then click Preview and wait for image to appear in preview box. Then Click OK to place if satisfied with preview:



IMS Map350 asks you to Specify source point on drawing screen and then destination point.



click on left side of screen



and straight line click on right side, then do Zoom Extents to see your image:

