

Plotting in Black Ink Only with MSCAD 2005 and Mapscenes 2006 by configuring a .CTB File

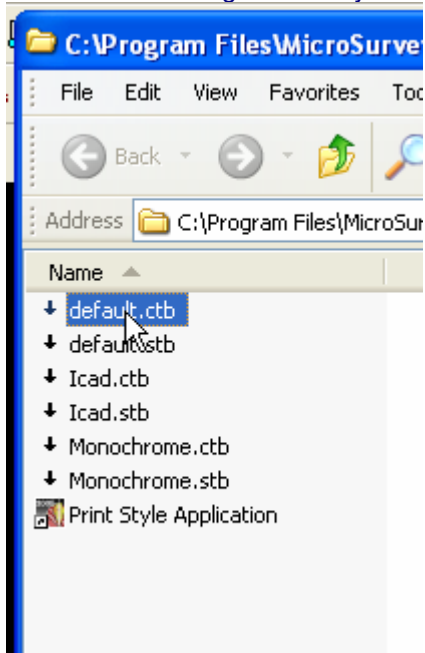
MSCAD2005 and Mapscenes 2006 display lines on the screen in various colors. If you are creating a plan to be printed in black ink, these colors can be configured to represent various line weights (or thicknesses) and line types when the drawing is printed.

Editing:

You have a few options for printing in black only. You can edit your print style table by opening:



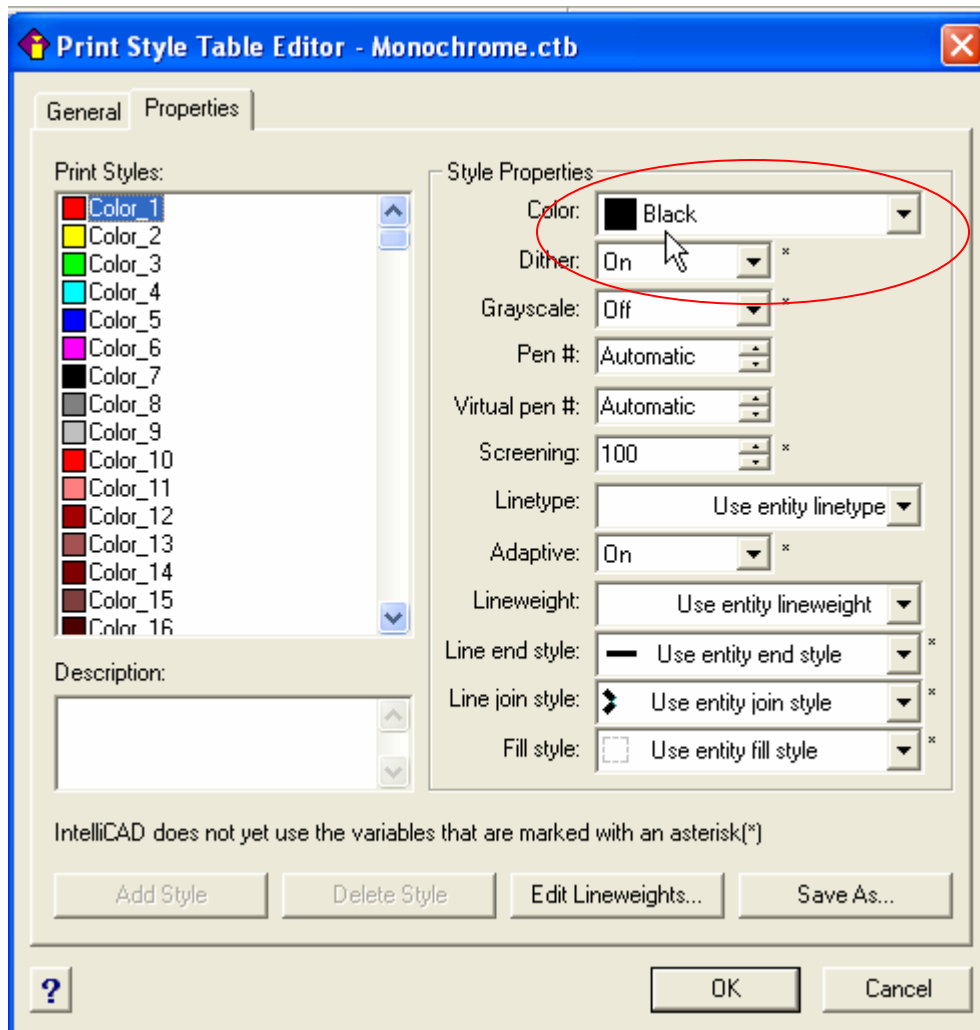
And double clicking the table you wish to edit:



1. You can make a fresh table by basing your custom settings on the monochrome table which is already in MSCAD or Mapscenes and saving it under a new name. You will want to configure the line type and lineweight for each color, but the plotted color is already designated as black. Note that colors 1 to 7 are the most common, although I've noticed that many drawings sent from architects use the full range of colors.

2. Or, you can open up your custom table and just reassign every color to be plotted in black, as you can see in the top right corner of the screenshot below. If you have a black and white printer and the color is set to any other color it will come out as a shade of gray.

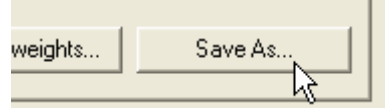
Note: Color_256, not available in the table below, is defined as "bylayer," so any color 256 entity will default to the color assigned to its layer.



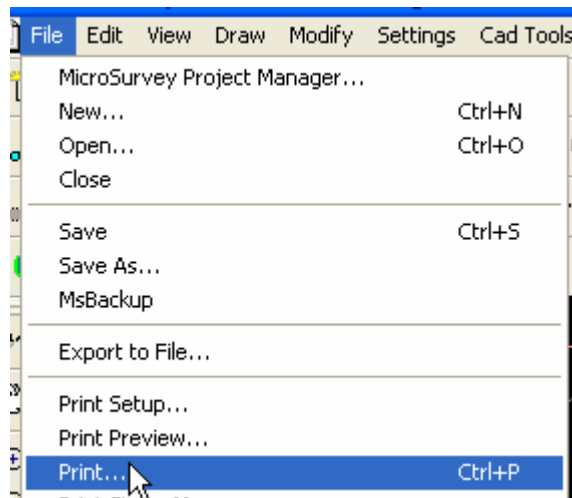
Printing

Once you have saved your print style table:

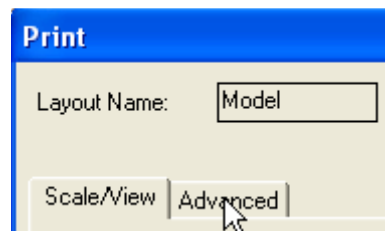
with an asterisk(*)



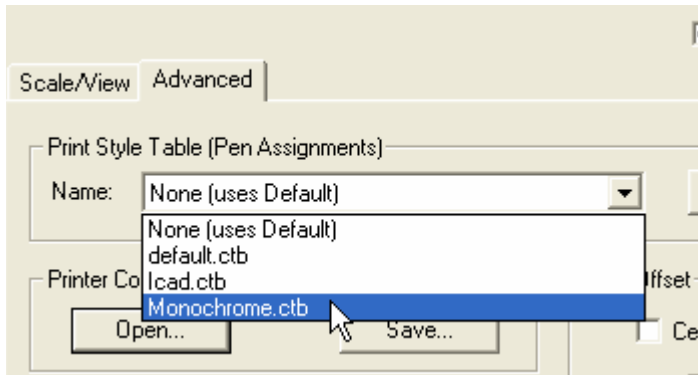
You can make use of it in your next print. Open the Print Dialogue:



Switch to the Advanced Tab:



And select the Print table you wish to use:



Once you have entered the other settings you can preview your drawing and then print it:



For more information on printing review the articles entitled **MSCAD 2005: Printing Overview** and **MSCAD 2005: Printing Comprehensive** which can be found at the Helpdesk.