

Evidence Recorder 5.0.0 Release Notes

Released on: TBD

New Features

Sokkia GSR2700 ISX – Added support for the Novatel OEM V board, and a new driver is available for the newer Sokkia GPS receivers.

GPS Tolerance – When tolerances are changed by the user, a record will be saved to the raw file indicating the new tolerance settings when a point is saved. Example, in the raw file you will see a note similar to the following:

--GPS Tolerance:

Sol=2,Elev=10,PDOP=4,SVs=6,RefID=0,HRMS=0.030,VRMS=0.050,Obs=3,Time=3

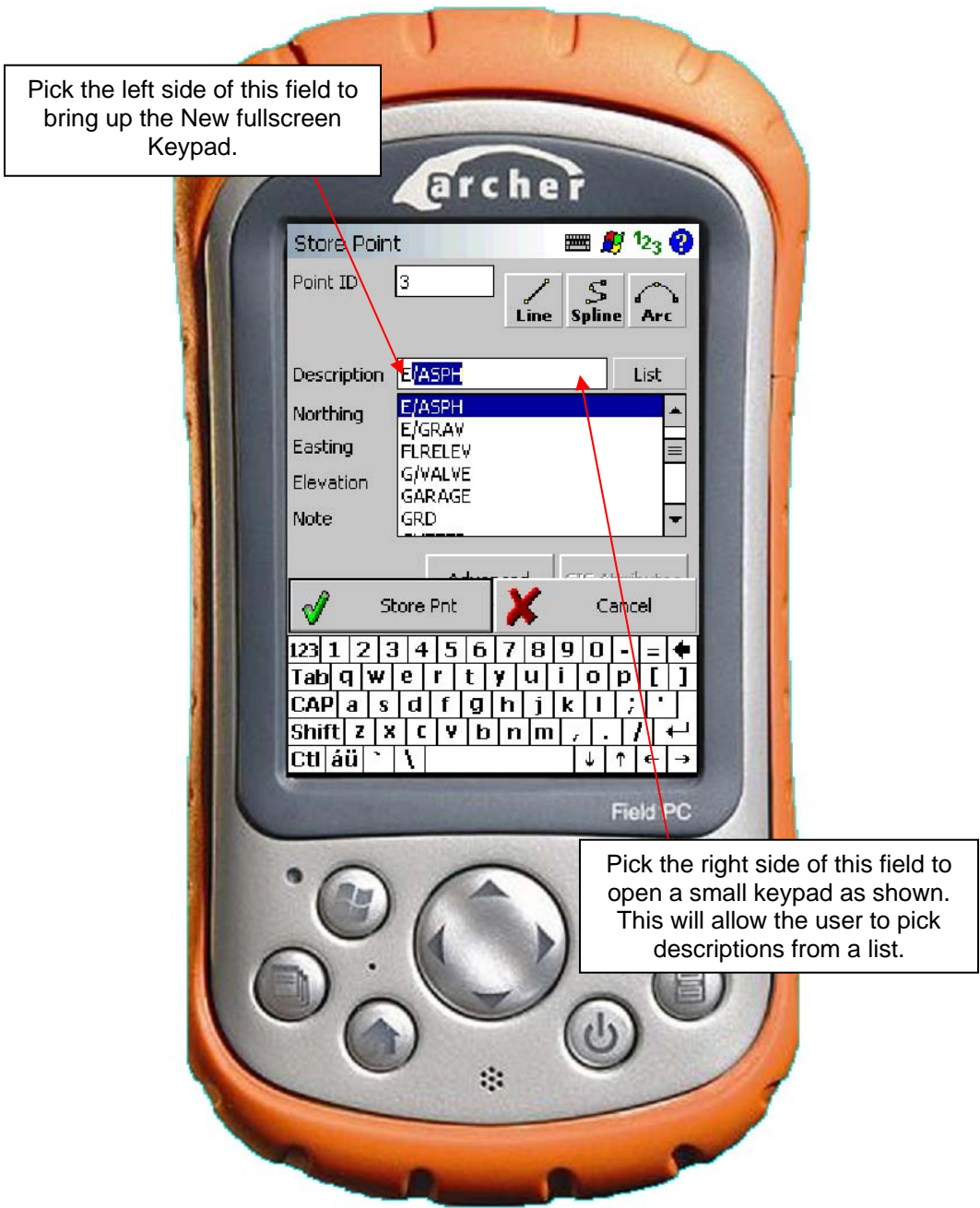
New Keypad – All versions of Evidence Recorder now have a new Key Pad. The new keypad has larger keys for easier data entry.



New options are available in the Program settings that allow you to:

- 1) Define what event triggers the key pad. Settings can be either None, Single Click or Double Click.
- 2) Define the key pad that Evidence Recorder uses, such as the default Windows key pad, or the new MicroSurvey version.
- 3) The key pad will be used primarily with non keyboard devices. However, if you want to, the new key pad can be used on devices with a keyboard such as the Tracker or Allegro.
- 4) When selecting descriptions, users will have a choice of activating the full screen keypad by tapping the right side of the field or a smaller keypad by tapping the left. This allows users to pick descriptions conveniently from a list.

Keypad Activation in the Description Field –



Juniper Systems Archer – A new installation is available for the Archer. Use the Windows Mobile 5.0 install.

EDM Mode in the Raw File – When the EDM mode is changed by the user, for example when switching to reflectorless mode, a note will be written to the raw file

Lock Disabled Message – When the user shoots a backsight using a robotic Instrument he will be notified that Lock has been disabled.

Instrument Profile – When you create a new project, open an existing one, or select a new instrument profile, a note will be stored in the raw file indicating what profile was loaded.

Hot Keys for Instrument – Users will now be able to define custom keys to activate common instrument operations at a single key stroke. Searching, ATR, Laser Pointer, Cursor Tracking, Guide Lights and Robot Joystick can be assigned.

New Horizontal and Vertical Angle Offset Dialogs – The dialogs have been redesigned to make them easier to learn and to allow more flexibility when entering measurements.

	Angle (Center)	Distance
HA		
VA		
SD		
HR		
HI		

No Solution

Observe Angle Observe Distance Store Point Cancel

	Angle (Height)	Distance
HA		
VA		
SD		
HR		
HI		

No Solution

Observe Angle Observe Distance Store Point Cancel

New Options Dialog – The Options dialog has been redesigned to reduce scrolling and clutter.

Options

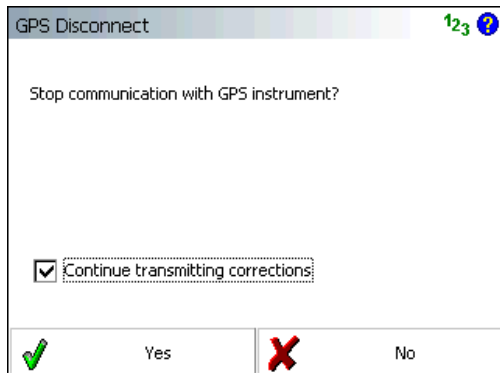
- Interface
- User Input
- System
 - Application Tips
 - Communication Trace File
- Total Station
- GPS
- Point Attributes
- Staking

OK Cancel

Fixed

GPS Bluetooth Connection (BASE) – When a user connected to a base using the Bluetooth connection on a Tracker, upon disconnection the base would stop transmitting corrections.

With the latest version, after programming the base, when you use the Disconnect command from the GPS Task menu, a new option is available on the disconnect screen:



The default is “Continue transmitting corrections”. Press Yes to disconnect from the base.

If the precision for Horizontal Angle is set to decimal degrees, the distance value for a Backsight shot gets pushed out of view

Add DXF File (Pocket PC build) - With “Enable Full Screen” turned on, after you Add a DXF file through the map data layers screen, you would get stuck in the Layer Manager screen with no buttons to get out of it.

EDM Modes – When connecting from the “Model and Communication” screen, not all EDM modes would show up for the current instrument connected to FieldGenius.

Pocket PC Build – Fixed a problem that would occur on certain hardware platforms running the PPC version of FieldGenius, where the following error would occur, “Unable to create project directory”.

Max EDM Distance – In some situations this would change to 1312.’

EDM Modes – Switching the EDM mode would turn off the “auto-center” feature.

Zoom Extents – The zoom extents will now get re-calculated when you unload a DXF file.

Scale Bar – The scale bar would not always get refreshed correctly after a zoom extents.

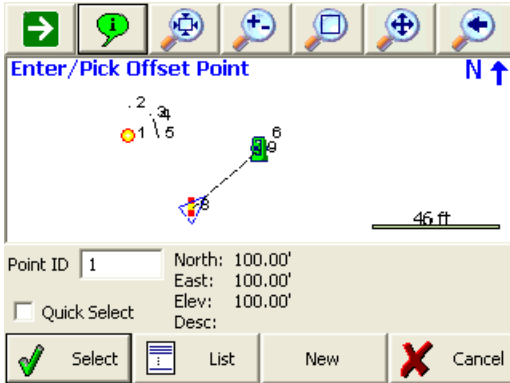
Pocket PC – Fixed the SIP problem when entering a description via the AutoMap screen. The SIP will now appear when the field has focus.

Point ID – When changing the next point id on the main interface, if you press enter it will no longer trigger a shot.

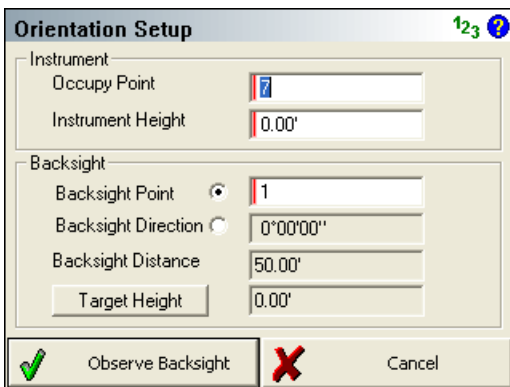
Robot TRK – Fixed the problem that would cause the “Auto Search for Prism” to stop working if the instrument was in a TRK EDM mode.

Robot Shoot Backsight – Fixed a issue when setting the backsight plate reading if the “Auto Search for Prism” was enabled.

Point Chooser – Improved the point chooser toolbar so it now displays the coordinates of the point you selected on screen. You can also now control the behavior of the toolbar and set it to automatically close or stay open after a point is selected.



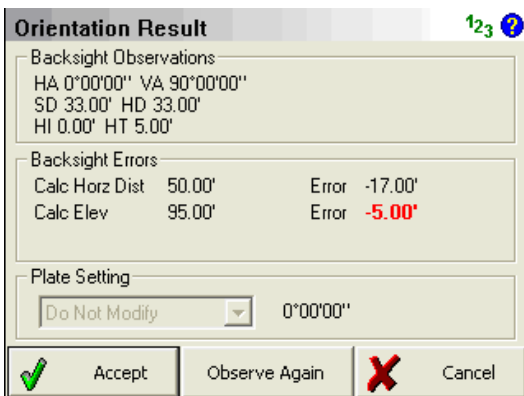
Occupy Point – Improved the interface on the Orientation Setup screen.



Occupy Point – Added target height field to the Orientation Setup screen.

Occupy Point – Removed extra screen between accepting setup information and map screen.

Occupy Point – Improved the interface on the Orientation Results screen.



Scale Bar and North Arrow – Improved these so they are more consistent and refresh correctly.

Trimble Antennas – Micro-Centered and Compact antennas added.

GPS AH Raw Record – This has been updated to the MA (Measured Height) is recorded as well as the RA (Reduced Height) record.

SRX Robot – Driver updated so the search is started faster and is more responsive.

SRX Robot – Driver updated so the IR Measurements are now much faster and responsive. Note that if you have cursor tracking on, and the EDM mode set to a IR Fine, it will be slower compared to having the cursor tracking off.

Leica 1200 – Driver updated so the search is started faster and is more responsive.

Leica 700 – Added support for the newer “Power” models in the Leica 700 series.

Measurement Errors – This has been updated so that when a measurement error is triggered we display a dialog message. Previous version turned the Information button red and displayed the error in the Information toolbar.

Tool Tips – These are now disabled when the “Enable Tip of the Day” is turned off.

Calculator – Improved the load time of the calculator.

Edit Fields – All edit fields in FieldGenius are now key pad ready meaning that you can define in the program settings what should happen when you click an edit field. By default all edit fields will open the new key pad, and if you want to access the calculator you simply press the new calculator button on the key pad screen.

DXF Export – The DXF export will now set the PDMODE to 3 which will cause point nodes to appear as a small “X” instead of a “dot”.