



Leica Geosystems
Incident Mapping Suite

Map360

Activation and Installation Guide





Table of Contents

Map360 Activation and Installation Guide	2
Installing the latest version of Map360	2
Option 1:	2
Option 2:	2
Activating or Updating your USB Key.....	4
V2.0 and Older:	4
V2.0 and Newer:	5
NOTES.....	6
Technical Support Questions	6
Websites	6

Map360 Activation and Installation Guide

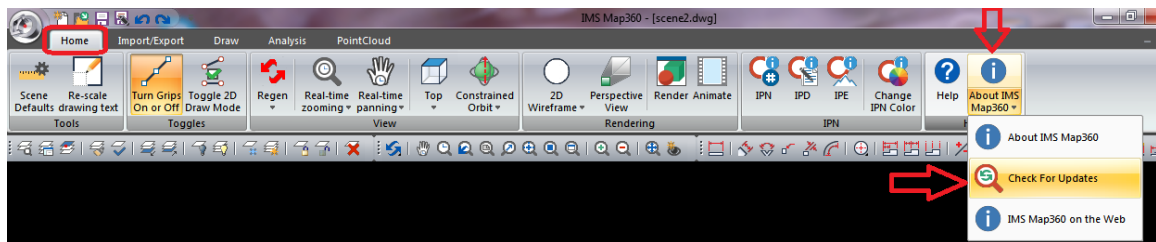
Installing the latest version of Map360

Option 1:

1. Download the latest version of Map360 from the following link:
<http://ims.leica-geosystems.com/download>
2. Once the download is complete, double click on the downloaded *.exe and proceed to **Option 2 Step 3** below.

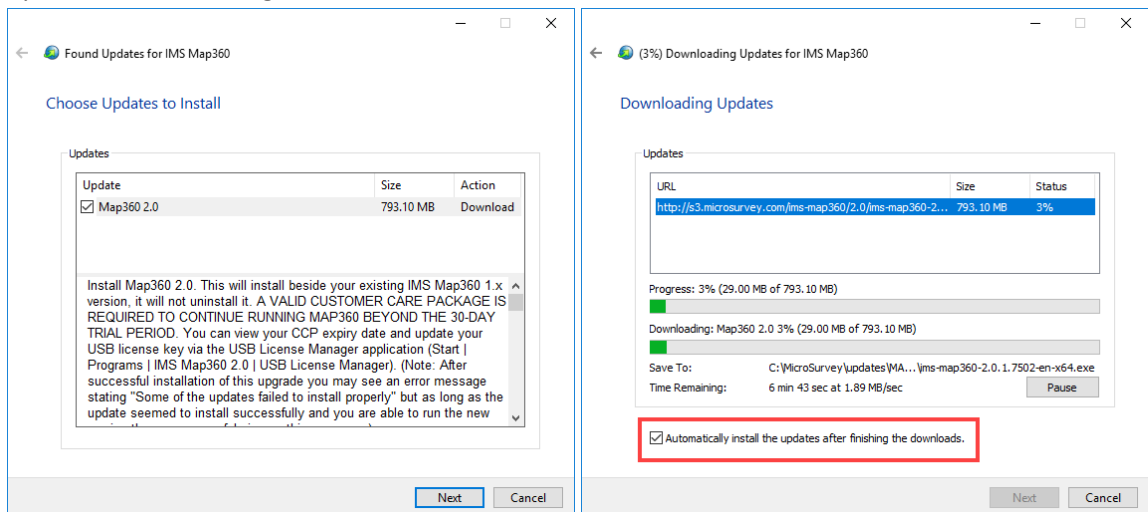
Option 2:

1. If you are currently using an older version of Map360 you can check for updates and install the latest version within the program. Go to the Home tab and within the **About IMS Map360** drop down, select **Check for Updates**.

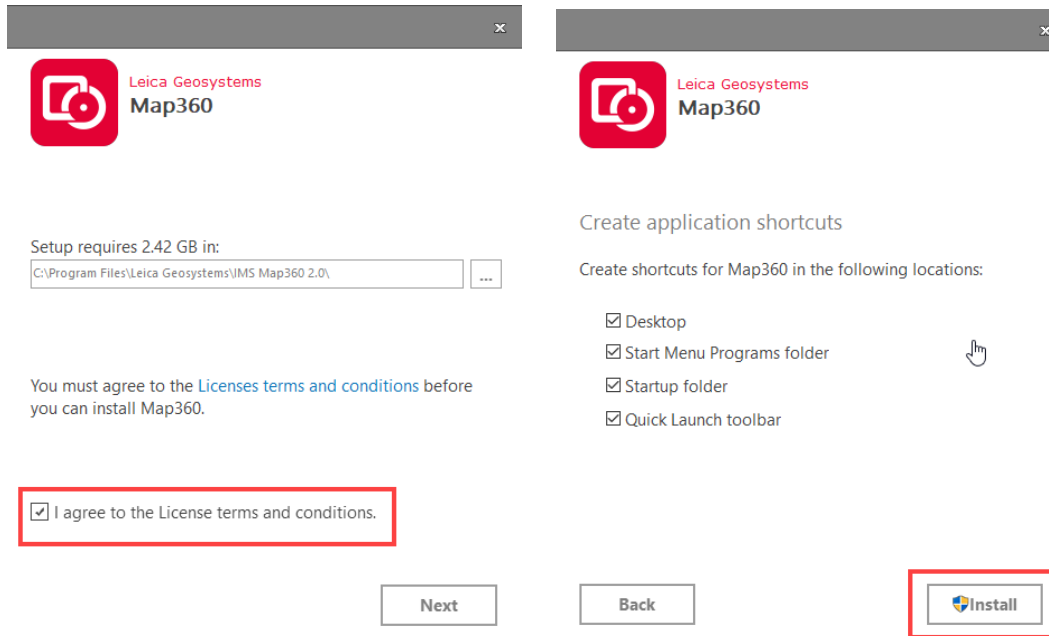


2. The program will check for updates and if there is a new version of Map360 it will display in the following dialog and you can choose the version to install. Select Next.

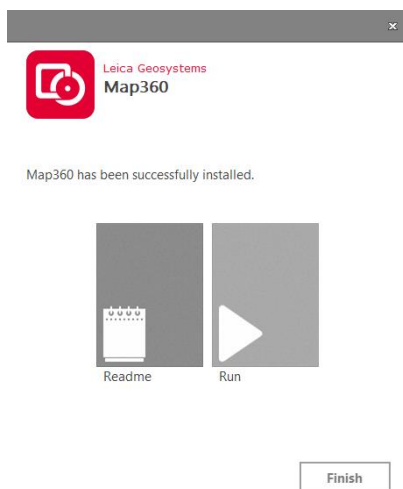
The next dialog shows the download progress. Check the box to Automatically install the updates after finishing the downloads.



- Once the download is complete, the install dialog will appear. Check the box to **Agree** to the License terms and conditions and then click **Next**. Check the shortcuts that will be created then click **Install**. The installation starts and may take a few minutes to complete.



- Once the installation is complete you can select **Run** to run the program, **Read Me** to read the Release Notes, or **Finish** to close the dialog. If you choose to close the dialog, the first time you run the program you will need to right click the shortcut and “**Run as an Administrator**”.



** Map360 first installs in a fully functional **30-day demo mode**, which can be licensed with your purchased USB License Key

Activating or Updating your USB Key

Your USB Key is used to license Map360 and must be used to run our software. **It must be activated the first time you use it and updated when you renew your maintenance contract or update your software.** Activating and updating your key is done with the USB License Manager which is installed automatically for you when you install Map360.

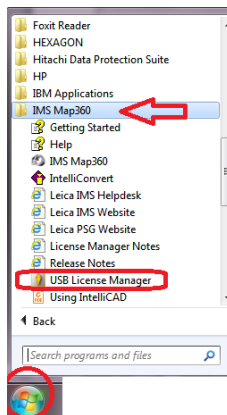
Before you begin, please ensure you have done the following:

- Make sure you have your USB key inserted in the computer and have internet access
- If you do not have admin rights, you may need to contact your IT department to complete the following steps.
- If you are accessing the internet from behind a firewall, which is the case for most agencies, the license manager may not be able to access our servers. You may need to do the key activation or update your key on a network that doesn't have restrictive internet access. Refer to this document for more information: [Updating USB Key – Dealing with Firewalls](#)

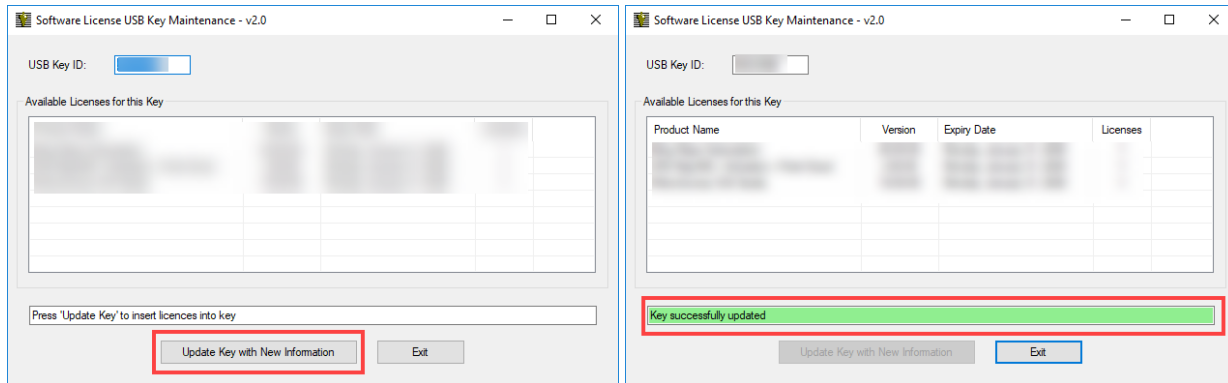
The **USB License Manager** is used to complete this process and is a small program that is found in your Windows Start Menu, or in the ribbon in version 2.0 or newer.

V2.0 and Older:

1. Once Map360 software or update is installed, confirm the USB License Key is inserted in your computer
2. Go to **Start** and find the IMS Map360 Folder. Start the **USB License Manager**



3. When the program starts it will scan your computer for a key and when it finds one it will automatically read the serial number and contact our server to find your license information. Once that is found it will be listed for you and includes details about the product(s), version you can run, your maintenance expiry date, and the number of licenses you own.

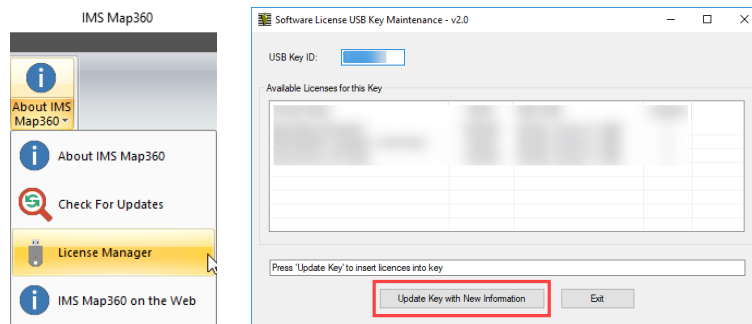


4. To complete the activation or to update your key, press the **Update Key with New Information** button.

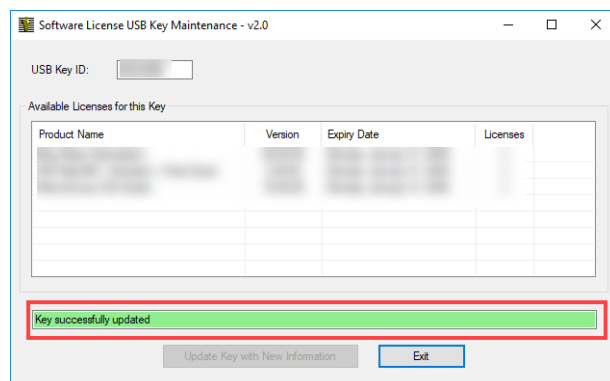
V2.0 and Newer:

1. You can also access the **License Manager** directly inside Map360. In the **Sketch Workspace:** Select the **License Manager** button from the Home Tab under the **About IMS Map360** drop down. **Advanced Workspace:** Select the **License Manager** button from the Help Tab

The License Manager dialog will appear. Check to make sure it is reading your USB Key # then select **Update Key with New Information**.



2. Once updated, it will read **Key Successfully Updated**.



NOTES

For customers using **point cloud data generated from 3D scanners or photogrammetry** including UAV/UAS point clouds, the Point Cloud module operates on the powerful Leica Cyclone platform. You will need either a licensed copy of Leica Cyclone installed on your computer **or** you can use the free Cyclone Viewer instead.

- Cyclone Viewer can be download here: [Cyclone Download](#) and download instructions can be viewed here: [Installing Cyclone Free Viewer version](#)
- List of supported formats: [Cyclone supported Point Cloud file formats](#)

Bing Maps subscription is free! If you require the subscription for Bing Maps, please call us at 800-661-3312 or email register@microsurvey.com with your USB key #.

Make sure you have Administrator rights for your computer when updating. If installing on an agency computer, you may need to have your agency IT staff install for you.

For Sales inquiries or renewing maintenance call us at: 1-888-632-8285

Technical Support Questions

Map360 has a support website dedicated to forensic users, visit ims.microsurvey.com to review available articles, movies, tutorials, download links and button to **“Submit a Ticket”** for tech support. You should receive an email confirmation almost immediately after it is in our system.



The first time you use this it will confirm you are registered and send you an email with password then you can either contact support by email at: IMS@MicroSurvey.com or use same link to Submit Ticket for future requests. For time sensitive issues call us toll free at: 1-888-632-8285 7:00-17:00 Pacific Time.

Websites

[FAQ](#)

[Knowledgebase](#)

[Training Movies](#)

[Resources](#)

[Release History](#)

Home Page: ims.leica-geosystems.com

For those that wish to explore and learn more functionality, we have many training movies and resources for prior version of the MapScenes release: [Training movies/mapscenes](#).